

4 bedrooms  3 bathrooms  Double Garage  215 Sq M



## MONTE

### INCLUSIONS:

Fixed site cost and BASIX;  
 2600 mm ceiling ground floor;  
 Ducted air conditioner;  
 Down-light package to  
 Kitchen/Living;  
 Caesarstone kitchen bench top;  
 Carpet to bedrooms;  
 Tiles to Living areas;  
 Mirrored Sliding robes;  
 Clothes line and Letter box;  
 Turf front and backyard;  
 Colored driveway;  
 Six months completion;



### KEY FACTS

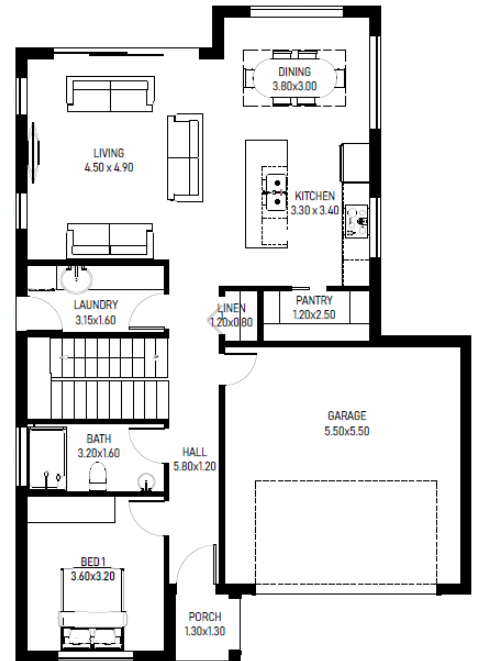
- ✓ Double storey
- ✓ 4 bedrooms
- ✓ 3 bathrooms
- ✓ Double Garage
- ✓ 215 Sq M
- ✓ Exterior width 10.50m
- ✓ Exterior length 15.30m

**HOUSE SIZE: 215 M<sup>2</sup>**  
**LAND SIZE: 431.20 M<sup>2</sup>**

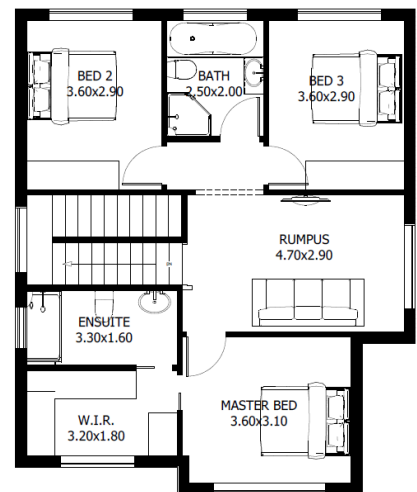
**FLOOR AREAS**

Ground Floor	133 sqm
First floor	82 sqm
<b>Total Floor Area</b>	<b>215 sqm</b>

**LAND SIZE: 431.20 SQM**



Ground floor



First floor

